



PATENTED NEARCUT TRADE MARK

The CAMBRIDGE GLASS COMPANY
CAMBRIDGE, OHIO, U. S. A.

“SUNBURST”

DESIGN
No. 2636

MADE BY
THE CAMBRIDGE GLASS COMPANY
Manufacturers of “NEARCUT” Glass
CAMBRIDGE, OHIO, U. S. A.

DESIGNED
ENGRAVED
AND
PRINTED
BY THE

Fray *Bro.* *Co.*

Fostoria, Ohio.

TO THE TRADE

WE herewith present some of our latest productions. The “Sun Burst” Design in full Table Set Ware is wonderfully Brilliant and Attractive and at moderate cost. An assortment of this design will change the appearance of your stock and is a profit maker.

Your special attention is called to the Children’s Toy Tea Sets and special Nearcut Vases and Hatpin Holders on pages 16, 17 and 18.

THE CAMBRIDGE GLASS CO.

Manufacturers of “NEARCUT” Glass.

P R I C E L I S T

NO. 2636 PATTERN—Finished

	Per doz. Pkg. Lot	Per doz. less Pkg. Lot	Doz. Pack to Barrel	Page
4 Piece Set	\$3 00	\$3 30	2	5
Cream	60	70	9	5
Spoon	50	55	13	5
Sugar and Cover	80	90	7	5
Butter and Cover	1 15	1 30	5	5
8 inch Nappy, A shape, actual measure	8½ in. 1 25	1 40	3½	6
8 " " B " " " " " "	9 in. 1 25	1 40	3	7
8 " " C " " " " " "	9¼ in. 1 25	1 40	3½	7
8 " " D " " " " " "	10½ in. 1 25	1 40	4	6
8 " " E " " " " " "	9½ in. 1 25	1 40	3½	7
8 " " F " " " " " "	8 in. 1 25	1 40	3	6
8 " " G " " " " " "	10 in. 1 25	1 40	2½	6
7 " " A " " " " " "	7¾ in. 80	90	5	8
7 " " B " " " " " "	8 in. 80	90	4	8
7 " " C " " " " " "	8½ in. 80	90	5	8
7 " " D " " " " " "	9¼ in. 80	90	5	9
7 " " E " " " " " "	8½ in. 80	90	4½	9
7 " " F " " " " " "	7 in. 80	90	4	8
7 " " G " " " " " "	9 in. 80	90	3½	9
5 " " A " " " " " "	5½ in. 45	50	10	13
5 " " B " " " " " "	7 in. 45	50	11	13
5 " " C " " " " " "	6 in. 45	50	14	13
5 " " D " " " " " "	5 in. 45	50	10	13
5 " " E " " " " " "	7 in. 45	50	14	13
4 " " Round " " " " " " " " " " " "	4½ in gross 3 00	3 60	25	9
11 " Plate	80	90	5½	10
7½ " " " " " " " " " " " " " " " "	45	50	13½	10
Fancy Pickle Tray, 7½ inch	40	45	12	10
Celery Tray, 10 inch	80	90	7½	10
Tall Celery	80	90	5	11
Oil, Drop Stopper	80	90	13	11
Olive Tray, 7 inch	45	50	6½	11
Bon Bon, A shape	45	50	12	11
Bon Bon, B " "	45	50	15	11

	Per Doz. Pkg. Lot	Per Doz. less Pkg. Lot	Doz. Pack to Barrel	Page
8 inch Vase, A shape	80	90	3½	12
8 " " B " " " " " " " " " " " "	80	90	3½	12
8 " " C " " or Sweet Pea	80	90	3	12
8 " " D " " " " " " " " " " " "	80	90	3½	12
7 " Bouquet Holder	65	75	4¼	13
Basket, 7 in.	80	90	4	13
Half-gallon Jug	1 65	1 85	2	14
Quart Jug	80	90	3	14
Tumbler	40	45	16	14
Quart Decanter, Ground Stopper	2 50	2 75	4	15
Quart Decanter, Drop " "	2 25	2 50	4	15
Goblet, 10½ oz.	40	45	7	15
Wine, 2 oz.	25	30	28	15

Unfinished

4 Piece Set	2 00	2 20	2	5
Cream	40	45	9	5
Spoon	30	35	13	5
Sugar and Cover	60	70	7	5
Butter and Cover	70	80	5	5
7 inch Nappy, round	60	70	3½	6
5 " " " " " " " " " " " " " " " "	Gross 2 50	3 00	10	13
4 " " " " " " " " " " " " " " " "	Gross 1 65	1 85	25	9
Fancy Pickle Tray	35	40	12	10
Celery Tray	65	75	7½	10

TOY TEA SETS

2630 Colonial Toy Tea Set	75	85	5¾	16
2635 Fernland Toy Tea Set	75	85	5¾	16

HAT PIN HOLDERS AND VASES

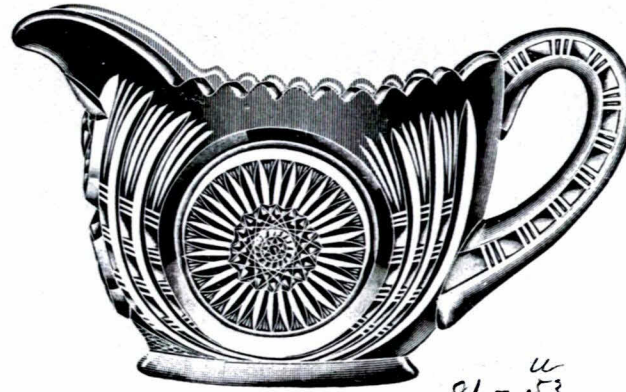
2642 Hat Pin Holder	70	80	10	17
2643 " " " " " " " " " " " " " " " "	70	80	10	17
2642 Candlestick	75	85	10	18
2643 " " " " " " " " " " " " " " " "	75	85	10	17

Scale 1/2 size



Sugar and Cover
Packed 7 dozen in a barrel

u
219 - 81
231 - 91



Cream
Packed 9 dozen in a barrel

u
81 - 53
91 - 61



Spoon
Packed 13 dozen in a barrel

u
56 - 41
61 - 46



Butter and Cover
Packed 5 dozen in a barrel

u
231 - 91
256 - 101

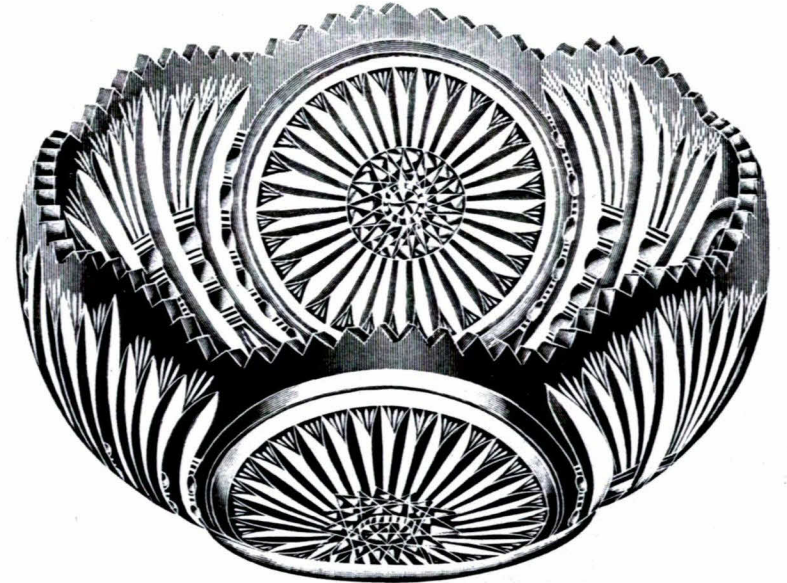
Sets packed 2 dozen
in a barrel

u
451 - 331
486 - 356



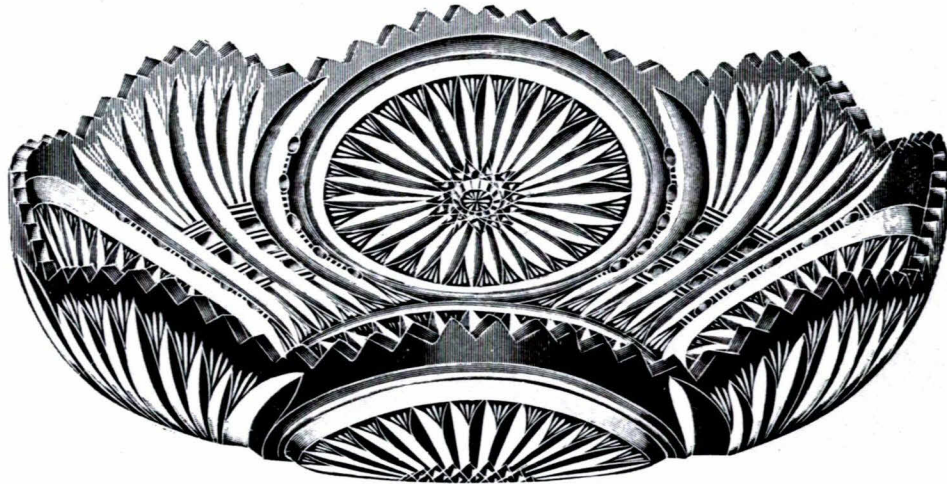
8 inch Nappy. G shape
Actual measurement 10 inches
Packed 2½ dozen in a barrel

Scale ½ size

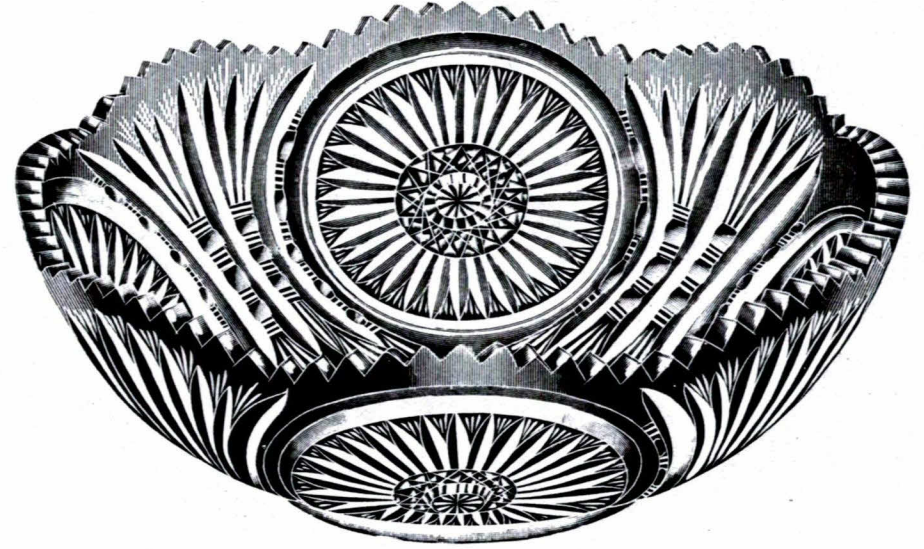


8 inch Nappy. F shape
Actual measurement 8 inches
Packed 3 dozen in a barrel

241
256



8 inch Nappy. D shape
Actual measurement 10½ inches
Packed 4 dozen in a barrel



8 inch Nappy. A Shape
Actual measurement 8½ inches
Packed 3½ dozen in a barrel



Scale $\frac{1}{2}$ size

8 inch Nappy. E shape
Actual measurement $9\frac{1}{4}$ inches
Packed $3\frac{1}{2}$ dozen in a barrel

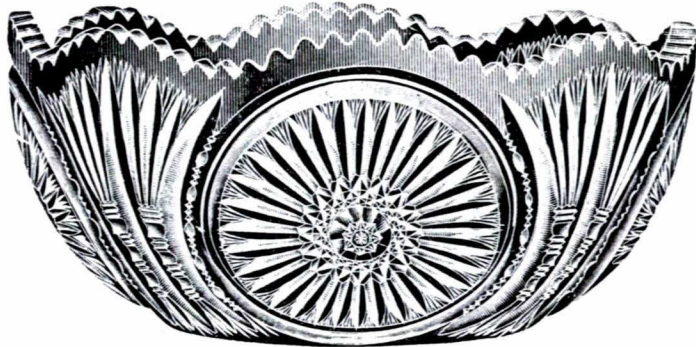


8 inch Nappy. B shape
Actual measurement 9 inches
Packed 3 dozen in a barrel

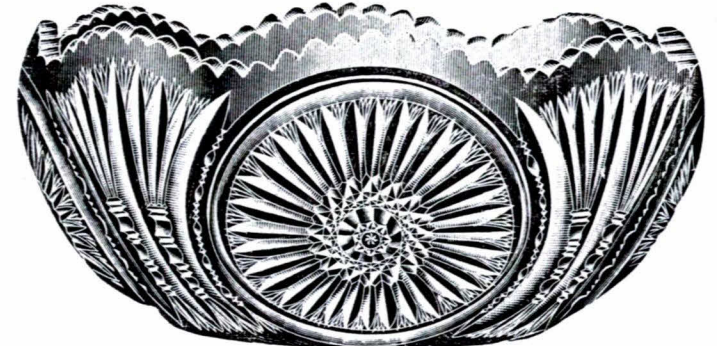
241
256



8 inch Nappy. C shape
Actual measurement $9\frac{1}{4}$ inches
Packed $3\frac{1}{2}$ dozen in a barrel



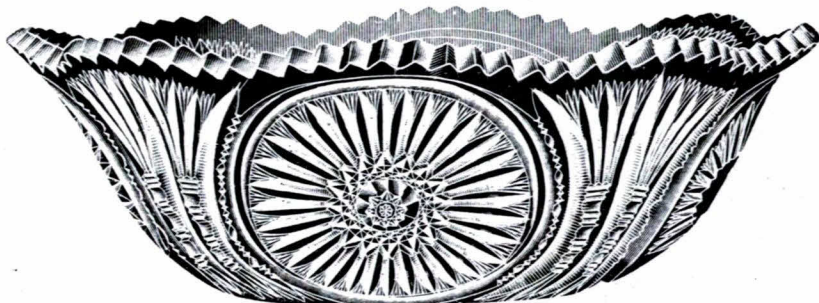
7 inch Nappy. A shape
Actual measurement 7 $\frac{3}{4}$ inches
Packed 5 dozen in a barrel



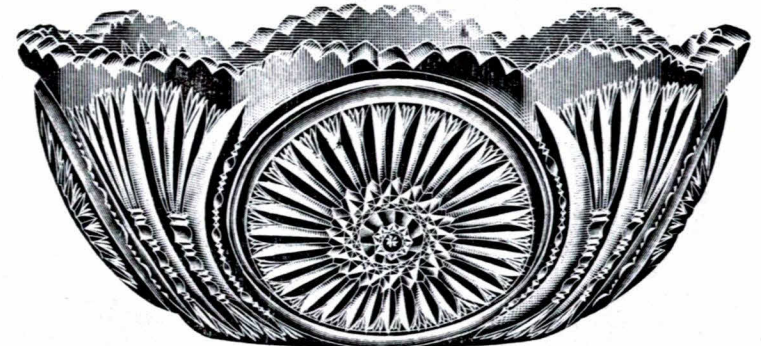
7 inch Nappy. F shape
Actual measurement 7 inches
Packed 4 dozen in a barrel

Scale $\frac{1}{2}$ size

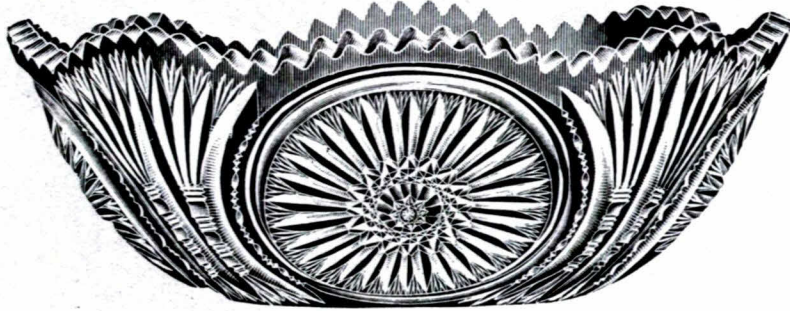
w. 12d.
95 - 81
106 - 91



7 inch Nappy. C shape
Actual measurement 8 $\frac{1}{2}$ inches
Packed 5 dozen in a barrel



7 inch Nappy. B shape
Actual measurement 8 inches
Packed 4 dozen in a barrel



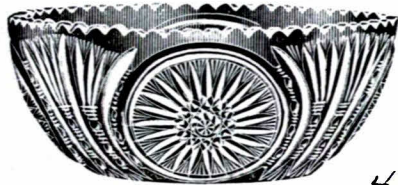
7 inch Nappy. D shape
Actual measurement 9 1/4 inches
Packed 5 dozen in a barrel



7 inch Nappy. G shape
Actual measurement 9 inches
Packed 3 1/2 dozen in a barrel

Scale 1/2 size

95
106



4 inch Nappy.
Actual measurement 4 1/4 inches
Packed 25 dozen in a barrel

5- 61- 43
66- 57

u
441 - 291
531 - 351



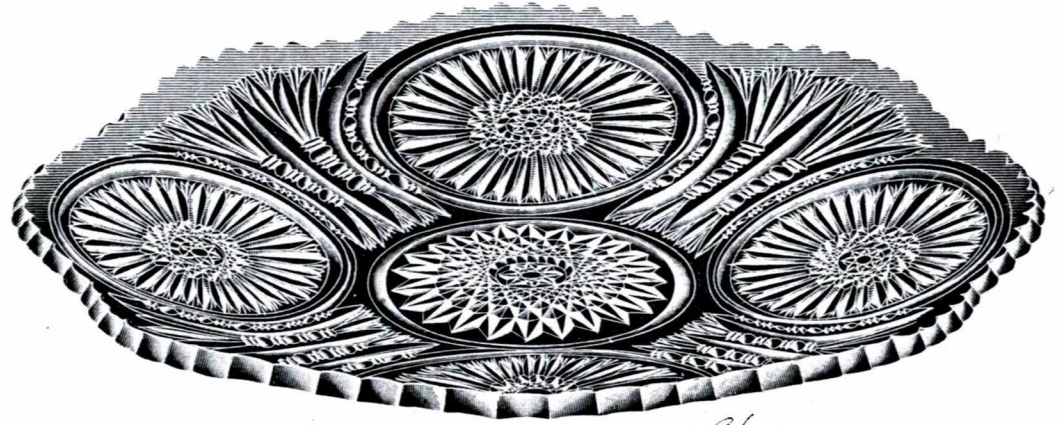
7 inch Nappy. E shape
Actual measurement 8 1/2 inches
Packed 4 1/2 dozen in a barrel

Scale $\frac{1}{2}$ size



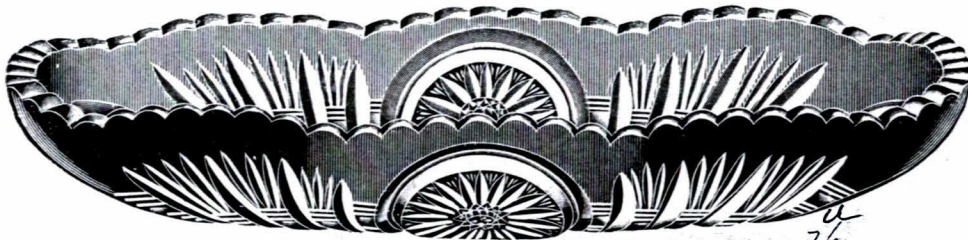
7 1/2 inch Fancy Pickle Tray
Packed 12 dozen in a barrel

57 - 46
56 - 51



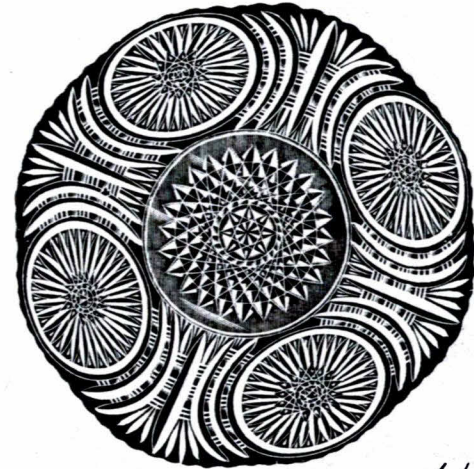
11 inch Bread Plate
Packed 5 1/2 dozen in a barrel

96 -
106 -



10 inch Celery Tray
Packed 7 1/2 dozen in a barrel

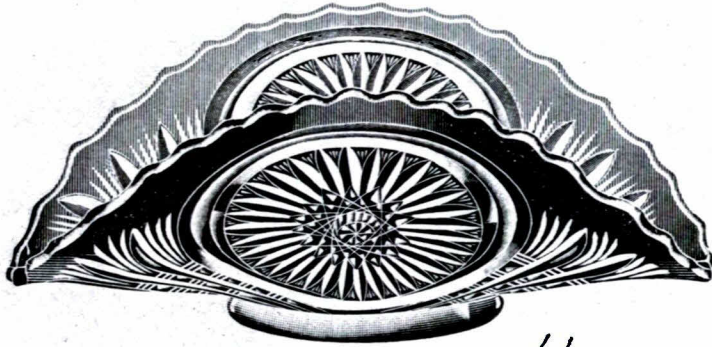
91 - 76
101 - 86



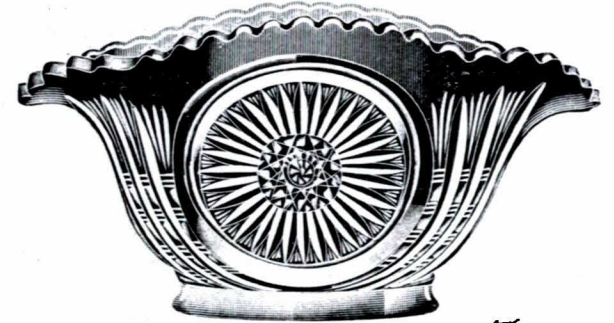
7 1/2 inch Card Plate
Packed 13 1/2 dozen in a barrel

61
66

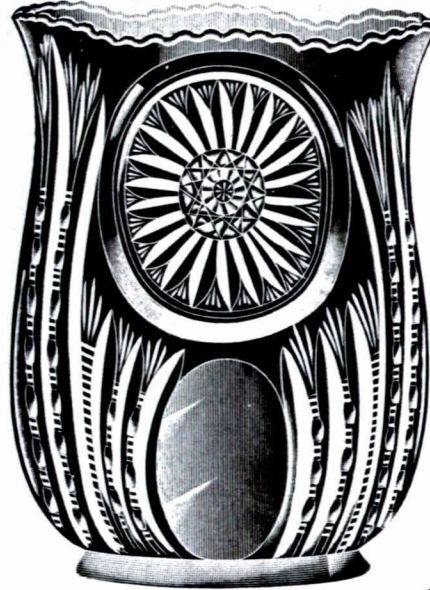
Scale 1/2 size



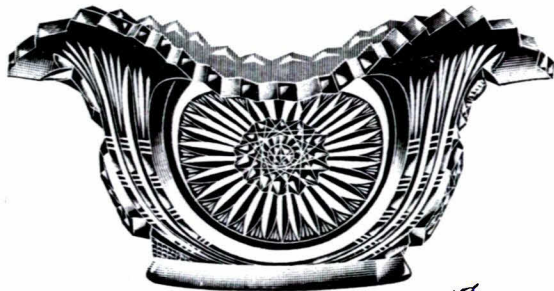
7 inch Olive Tray 61
Packed 6 1/2 dozen in a barrel 66



Bon bon. A shape 56
Packed 12 dozen in a barrel 61



Tall Celery 93
Packed 5 dozen in a barrel 106

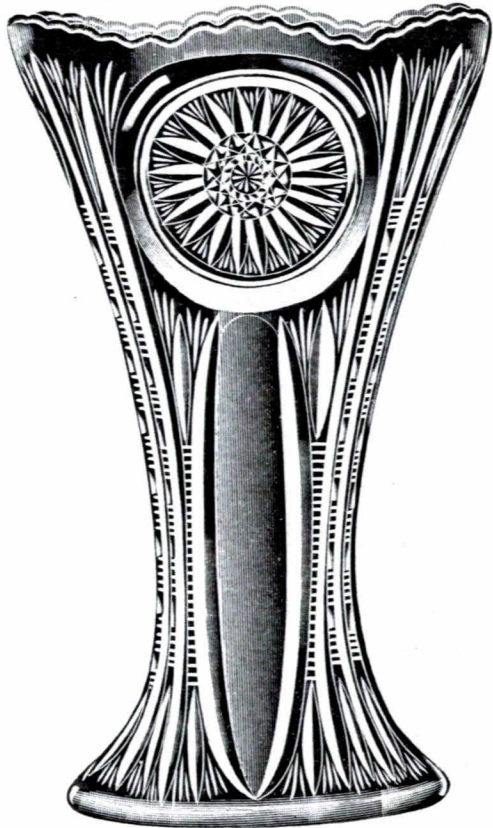


Bon bon. B shape 56
Packed 15 dozen in a barrel 61

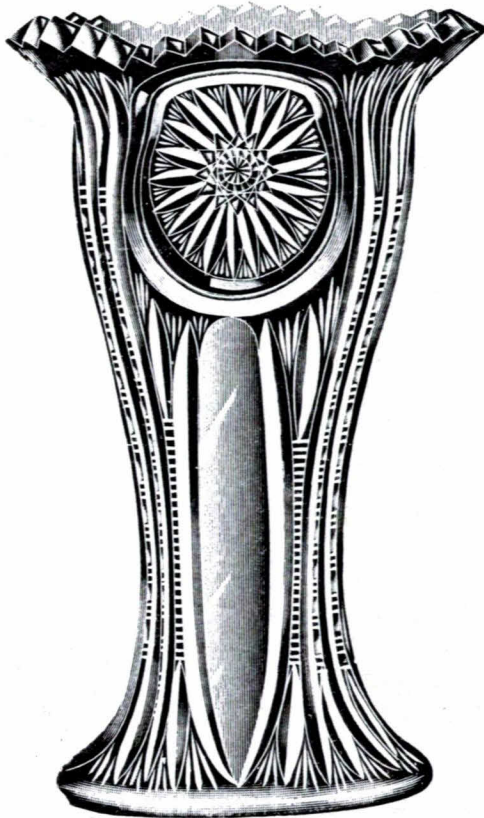


Oil Drop Stopper 106
Packed 13 dozen in a barrel 216

Scale $\frac{1}{2}$ size



8 inch Vase. A shape
Packed $3\frac{1}{2}$ dozen in a barrel

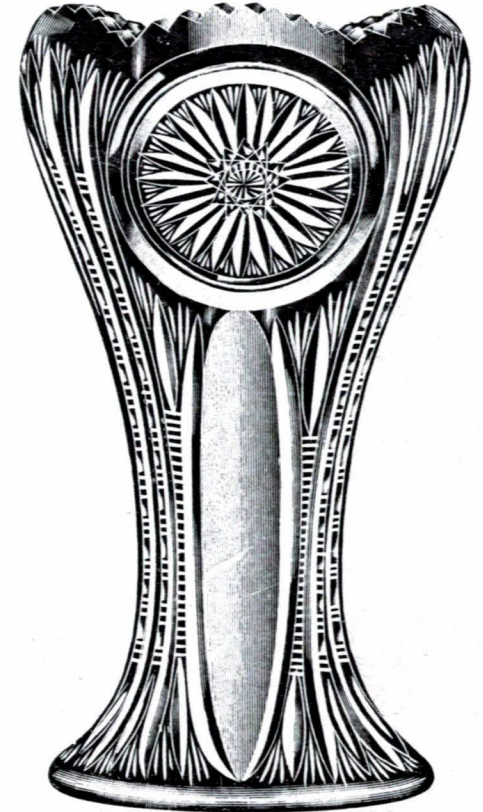


8 inch Vase. B shape
Packed $3\frac{1}{2}$ dozen in a barrel



8 inch Vase. C shape or Sweet Pea
Packed 3 dozen in a barrel

96 - 86
106 - 96



8 inch Vase. D shape
Packed $3\frac{1}{2}$ dozen in a barrel



5 inch Nappy. A shape
Actual measurement 5 1/2 inches
Packed 10 dozen in a barrel

61-43
66-51



5 inch Nappy. D shape
Actual measurement 5 inches
Packed 10 dozen in a barrel



5 inch Nappy. E shape
Actual measurement 7 inches
Packed 14 dozen in a barrel



7 inch. Boquet Holder
Packed 4 1/4 in a barrel

86
96



5 inch Nappy. B shape
Actual measurement 7 inches
Packed 11 dozen in a barrel

Scale 1/3 size



7 inch. Basket
Packed 4 dozen in a barrel

93
106



5 inch Nappy. C shape
Actual measurement 6 inches
Packed 14 dozen in a barrel

Scale 1/2 size



Quart Jug
Packed 3 dozen in a barrel

96
106



Tumbler
Packed 16 dozen in a barrel

W
57-47
61-51



Half Gallon Jug
Packed 2 dozen in a barrel

286
306



Goblet 10½ oz. 53
Packed 7 dozen in a barrel 61



Quart Decanter 361
Packed 4 dozen in a barrel 386

Scale ½ size



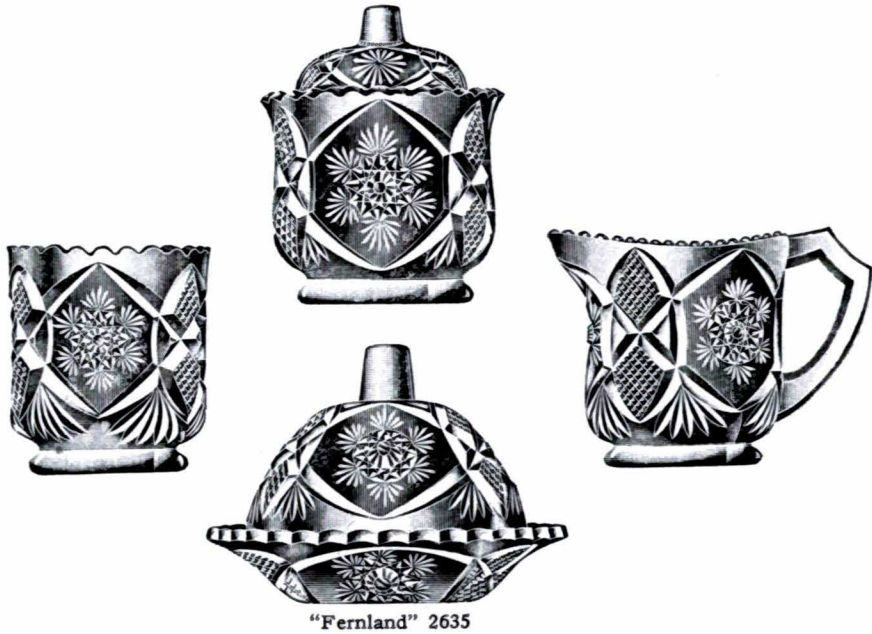
Wine 2 oz. 38
Packed 28 dozen in a barrel 41

Child's Toy Tea Sets

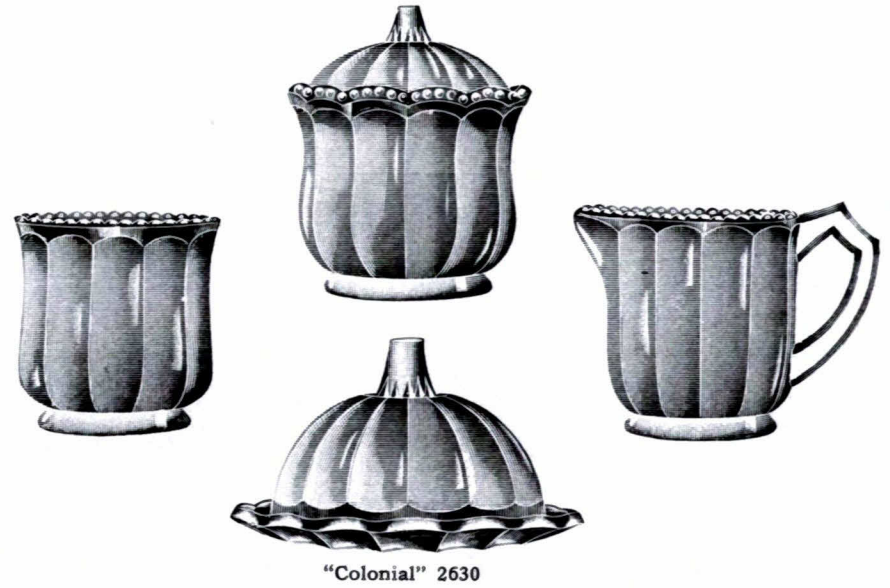
Made in Crystal, Blue and Green

Scale $\frac{1}{2}$ size

Special for Christmas gifts.
Each set packed complete
in separate pasteboard box.



Set 93
106



Sets packed 5 $\frac{1}{2}$ dozen assorted colors in a barrel

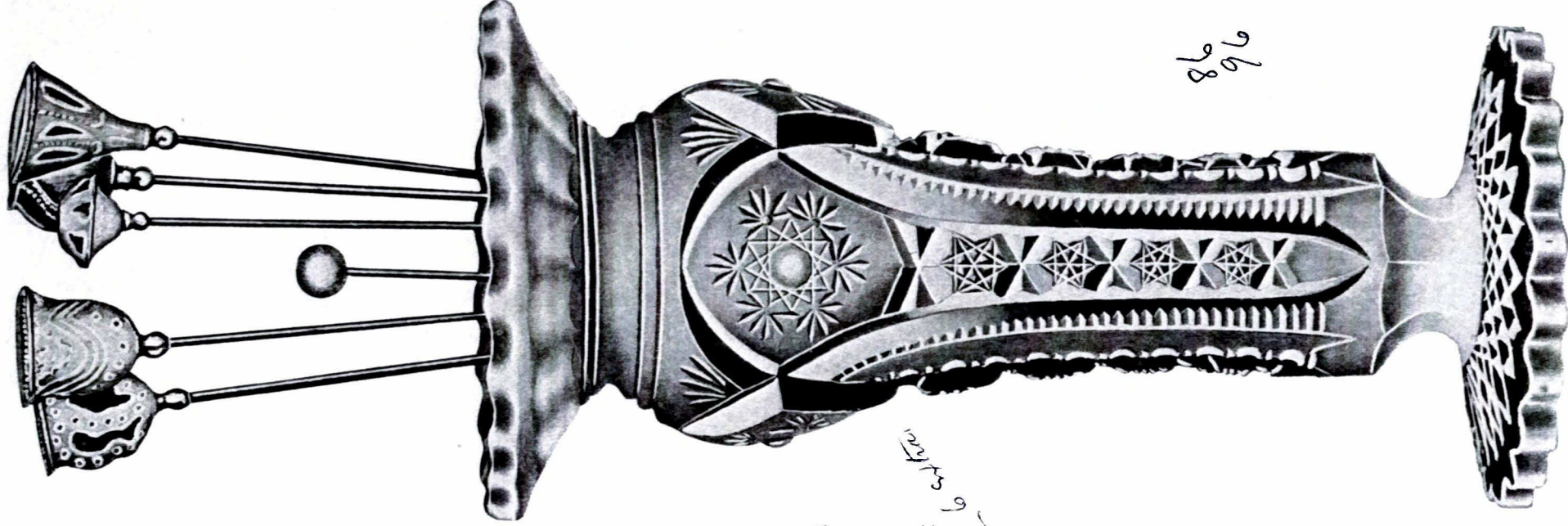
Season's
Novelty

Hatpin or Flower
Vase

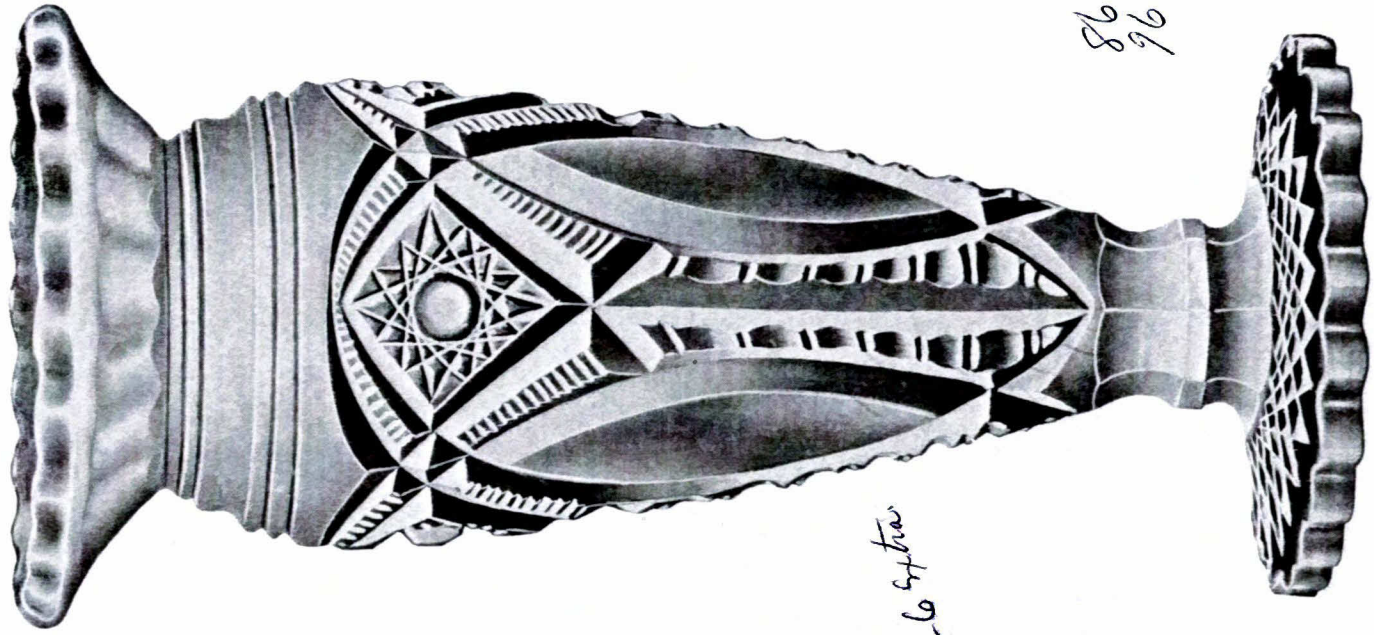
Special Brilliant
"Nearcut"
Design.

This also
makes a very
desirable
Candlestick.
We supply glass
Candle-well
to fit in the neck
of the Vase. *see sketch*

86
96



"Nearcut" 2643
Actual size. Packed 10 dozen in a barrel



Season's
Novelty
Hatpin or Flower
Vase
Special Brilliant
"Nearcut"
Design

This also
makes a very
desirable
Candlestick.
We supply glass
Candle-well
to fit in the neck
of the Vase. @ 6 *5/16*

86
96

"Nearcut" 2642
Actual size. Packed 10 dozen in a barrel

